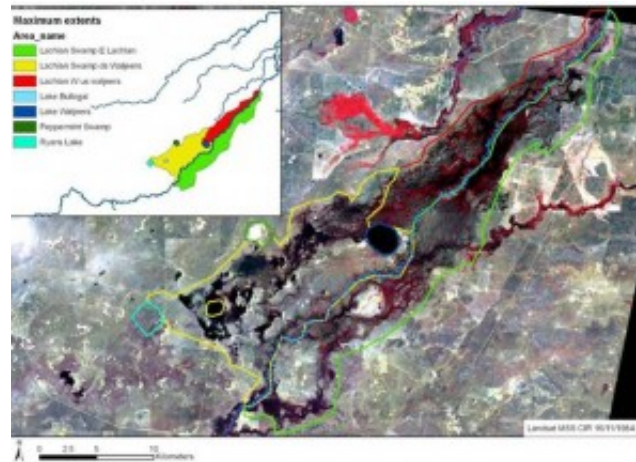


Lachlan Swamp

Lachlan Swamp

[caption id="attachment_1354" align="alignleft" width="300"]



Satellite image of Lachlan Swamp and various features (Image: Lisa Thurtell, OEH)[/caption]

Located along the lower Lachlan River, the Lachlan Swamp includes Lake Waljeers, Peppermint Swamp, Lake Bullogal and Ryans Lake. Listed in the [Directory of Important Wetlands](#), this area is forested with Black Box (*Eucalyptus largiflorens*) and River Cooba (*Acacia stenophylla*), with River Red Gum on the margins. Peppermint, Lake Bullogal and Ryans lakes are predominantly covered by Lignum (*Muehlenbeckia florulenta*) shrubland. These wetlands are a good example of River Red Gum–Black Box vegetation association and when flooded, support large numbers of waterbirds, including egrets and a variety of ducks, such as the Australian Shoveler (*Anas rhynchos*) and Freckled Duck (*Stictonetta naevosa*).