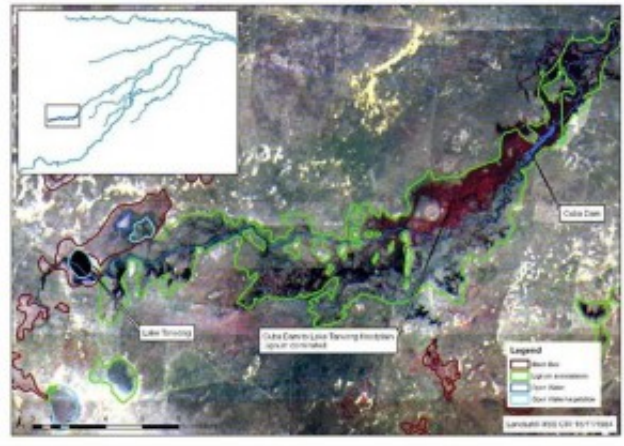


Merrowie Creek (Cuba Dam to Chillichil Swamp)

Merrowie Creek (Cuba Dam to Chillichil Swamp)

[caption id="attachment_1367" align="alignleft" width="300"]



Satellite image of Merrowie Creek and various features (Image: Lisa Thurtell, OEH)[/caption]

Merrowie Creek is a distributary of the Lachlan River, leaving the river near Hillston. Beyond Cuba Dam, Merrowie Creek spreads to Tarwong Lake and interconnects with Box Creek to reach Chillichil Swamp. Tarwong Lake is a series of shallow depressions fringed by River Red Gums and Lignum. When flooded it forms a valuable waterbird habitat, which is one reason it is listed on the [Directory of Important Wetlands](#). Black box, Canegrass and Bladder Saltbush also occur in the area. Tarwong Lake was also used as a community monitoring site (CM834). As an effluent creek there is provision within the Water Sharing Plan to provide replenishment flows for riparian users.